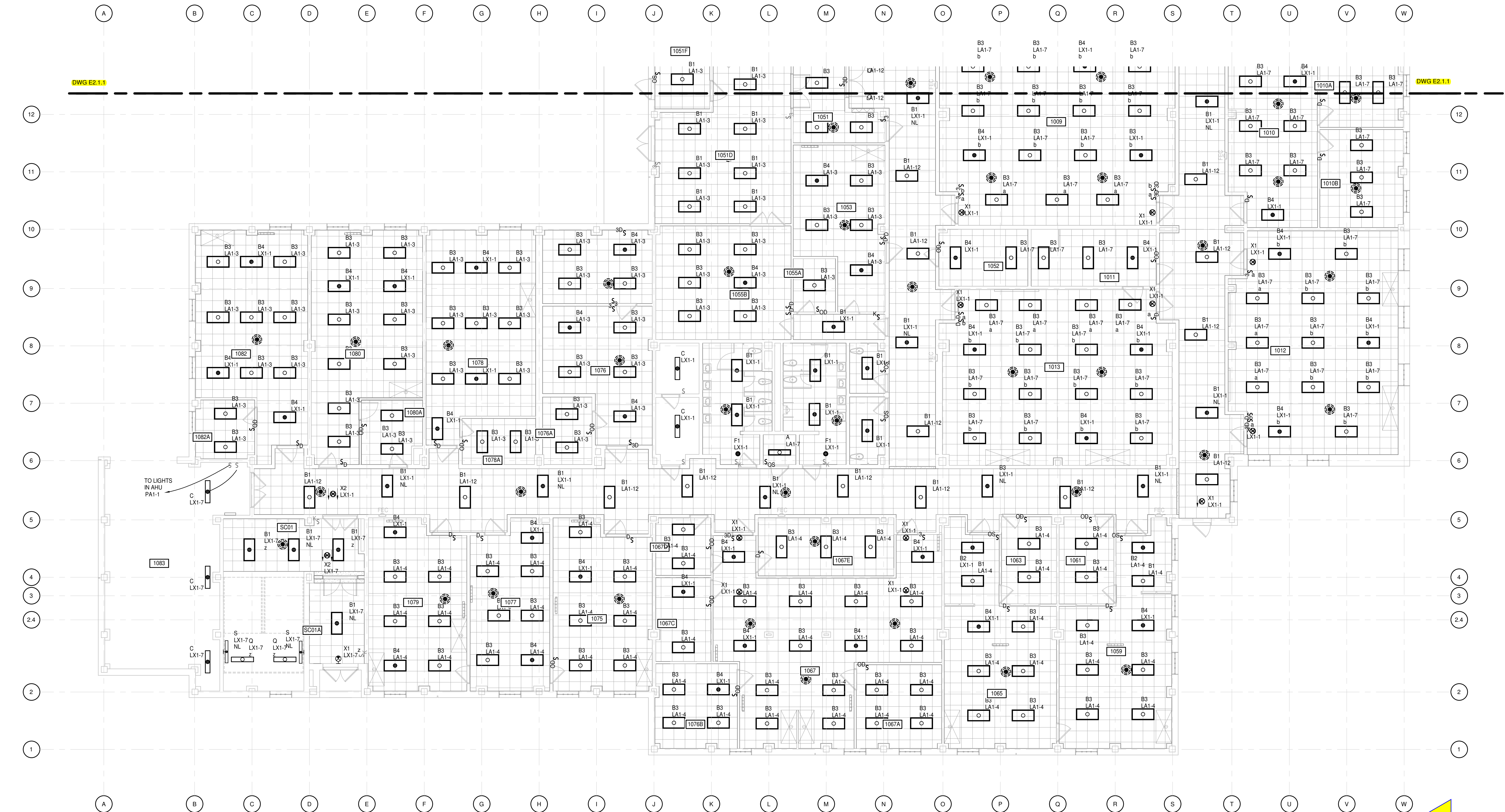


3/25/2019 10:37:19 AM



FIRST FLOOR PLAN - PART B - LIGHTING
1/8" = 1'-0"

KEYNOTES
APPLIES TO DRAWINGS E2.X.1
REPRESENTED BY

1. LIGH

GENERAL NOTES
A. REFER TO THE DETAIL ON DRAWING E4.1 AND CONNECT THE FIXTURE TO THE EMERGENCY CIRCUIT INDICATED AND LOCAL NORMAL LIGHTING CIRCUIT SUCH THAT THE FIXTURE OPERATES WITH THE LOCAL LIGHTING CONTROLS BUT WILL FULLY ILLUMINATE ON CONNECTION OF EMERGENCY POWER. PROVIDE SIGNAGE AT EACH LOCATION THAT THE FIXTURE IS FED FROM MULTIPLE SOURCE PER NEC. EXIT SIGNS AND FIXTURES INDICATED WITH "NL" SHALL BE ILLUMINATED AT ALL TIMES

PROGRESS
PRINT NOT FOR
CONSTRUCTION

Dobo Hall Renovation - Package A
SCO PROJECT NO. 18-19798-01A
UNC Wilmington
4978 CAHILL DR, WILMINGTON, NC 28403

PROJECT NO.	DATE
580999	MARCH 27, 2019
REVISIONS	
DATE	DESCRIPTION

FIRST FLOOR PLAN
- PART B -
LIGHTING

E2.2.1